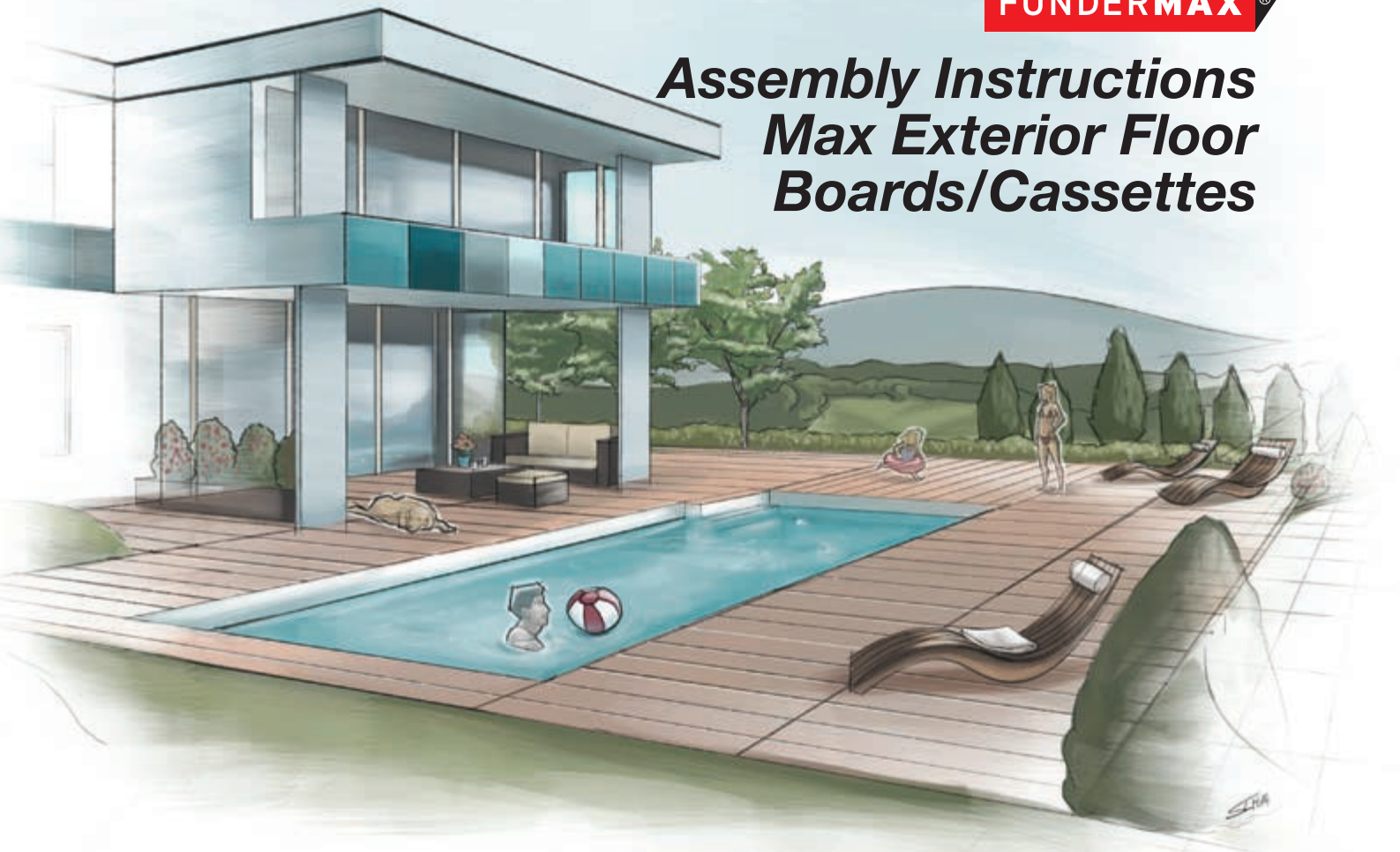


FUNDERMAX®

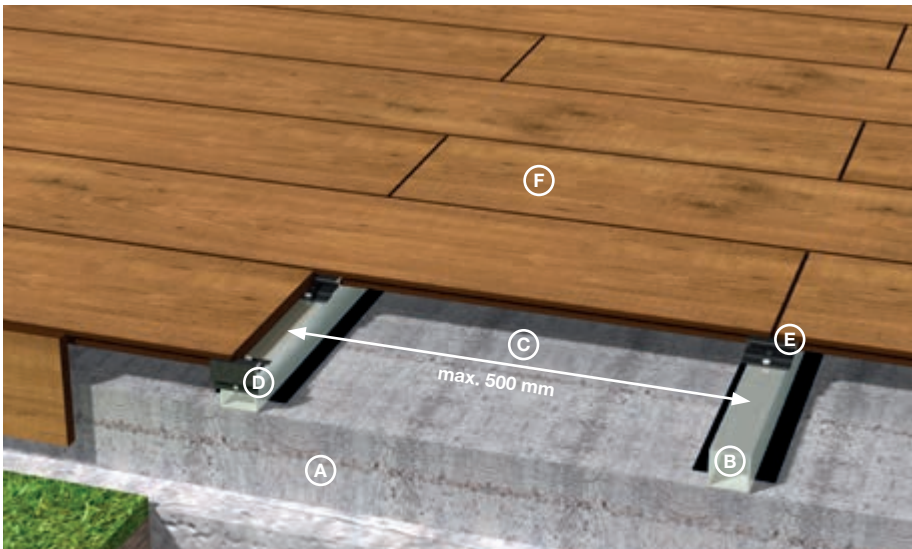
***Assembly Instructions
Max Exterior Floor
Boards/Cassettes***



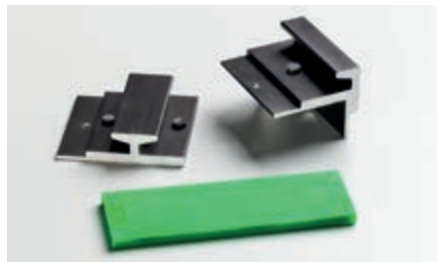
exterior

**for
people
who
create**

General Information Max Exterior Floor Boards/Cassettes



Max Exterior floor boards/cassettes (surface Hexa)



Accessories: Middle clamp, bottom/top clamp, separator

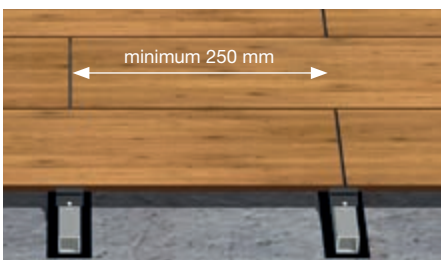
Laying options

Floor board:

Surface width 4100 x 220 mm + joint width 5 mm = 4105 x 225 mm surface area per floor board = 0.92 m²



Max Exterior floor boards aligned



Max Exterior floor boards staggered

Cassette:

Surface width 1000 x 450 mm + joints = 1005 x 455 mm surface area per cassette = 0.45 m²



Max Exterior cassettes aligned



Max Exterior cassettes staggered

- (A) Foundation
- (B) Substructure
- (C) Axial distance (max. 500 mm)
- (D) Top/bottom clamp
- (E) Middle clamp
- (F) Floor boards (15 mm)

Laying the floor boards/cassettes

■ The floor boards/cassettes are mounted with open joints. Water flow conditions and waterproofing need to be guaranteed elsewhere.

■ Assembly must be performed on a precisely aligned, professionally laid substructure.

■ Please be careful not to damage existing sealings while laying the substructure.

■ The downward slope of the floor boards/cassettes must be at least 1.5% to one side.

■ For staggered joints, floor boards or cassettes must overlap laterally by a minimum of 250 mm.

■ A substructure bar lies under every separator joint. On it, both panel parts are fastened with a middle clamp.

Laying distances

For 15 mm thick floor boards, the distance to the substructure must be a maximum of 500 mm (middle to middle). This allows for a load of up to 3 kN/m. In case you are unable to maintain a maximum distance for constructive reasons, please contact our applications engineering department. For special designs, it is possible to manufacture floor boards up to 20 mm thick—with these, you can realize a distance of up to 800 mm with the same load. The floor boards/cassettes are to be fastened to every substructure bar. The substructure bars must be sufficiently supported, so that flexing and slipping during assembly are prevented. To avoid knocking or rattling later on, we recommend storing them on rubber strips or similar.

Assembly of Max Exterior Floor Boards/Cassettes

1) Subsurface preparation

The subsurface and substructure must have sufficient static bearing capacity. A functioning minimum distance for ventilation of 25 mm to the subsurface must be guaranteed.

Grass or similar is unsuitable as a subsurface! Make sure the subsurface has sufficient drainage.



2) Substructure preparation

We recommend the use of standard aluminium forming tubes as a substructure. Wood substructures need to be properly protected from moisture. The substructure must lie at a 90° angle to the floor board/cassette.



4) Middle clamp assembly

Insert the floor board/cassette into the top clamp and fix the floor board/cassette to the substructure bar with the middle clamp. The rubber mountings on the clamps prevent lateral slipping of the floor board/cassette.



6) Joints/displacement room

Moreover, the separator will secure the displacement room necessary for the floor board/cassette.

(CAUTION: Remove afterwards!)



3) Top clamp assembly

Mount top clamps to every substructure so that they are precisely aligned. To screw in the clamps to the substructure, please use raised head/fillister head screws with a maximum diameter of 3.8 mm.

5) Mounting the next floor board

Prior to joining the next floor board/cassette, attach the separators. You can press the next floor board tightly to the previous and thereby guarantee a uniform joint distance.

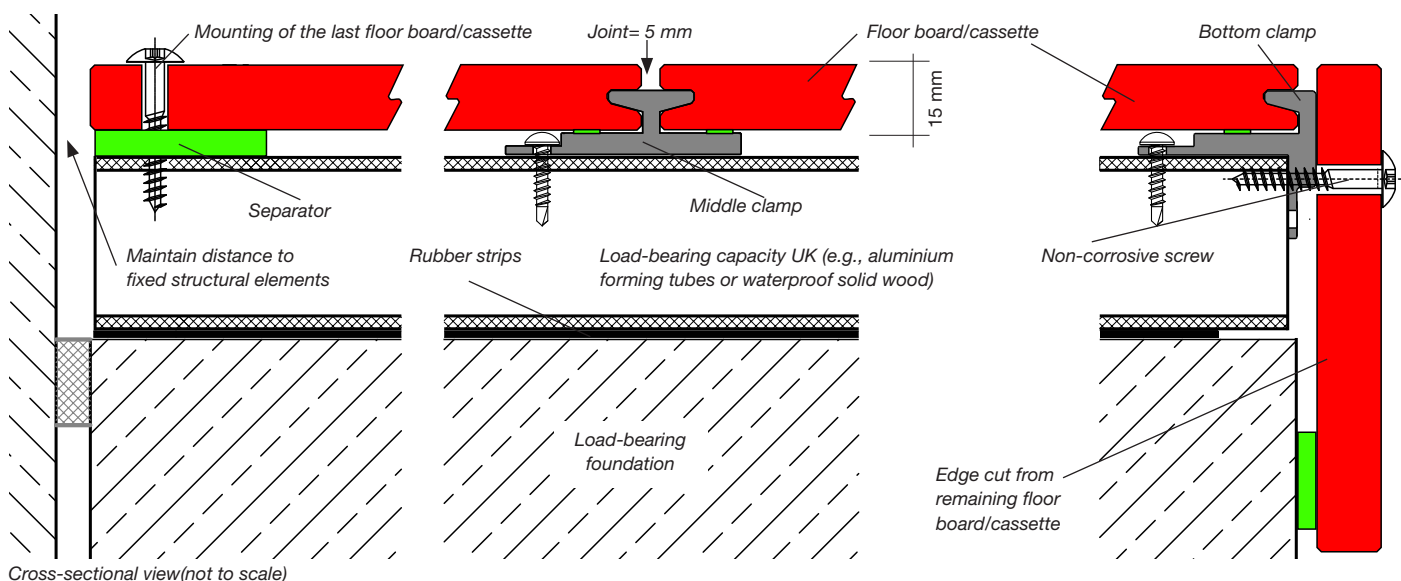
7) Completion

Should the final floor board/cassette need to be cut, it must be fastened to the substructure using a fillister head screw (no flathead!) or a commensurate polyurethane façade adhesive.



Suitable long c-clamps will help you to assemble the floor boards/cassettes to the prior laid floor board/cassette in an efficient way.

Details Max Exterior Floor Boards/Cassettes



Cross-sectional view(not to scale)

■ If you need to cut the final floor board/cassette breadthwise, fasten it to the substructure using a fillister head screw (no flathead!) or a commensurate polyurethane façade adhesive. Use the supplied 5 mm discs as separators.

■ To create attractive edges (e.g., to a lawn), top and bottom clamps are available separately.

■ Edge planks that match the design and requirements of your construction can be manufactured using the floor boards or cassettes. It is easy to cut matching edge planks from the floor boards using suitable woodworking tools.

■ The longitudinal protrusion of the floor boards over the substructure may not exceed 150 mm.

■ The floor boards/cassette contracts and distends from absorbing and releasing moisture. Therefore, leave a distance to fixed edges and buildings of at least one separator.

■ Max Exterior floor boards/cassettes are easily machinable using carbide metal-equipped woodworking tools. Saw using stable circular saws or circular hand saws for assembly blanks. Drill by hand with high-speed steel spiral drills, using a drill bit of < 90°. To decrease risk of injury, we recommend chamfering cut edges.

Additional information on processing Max Exterior panels can be found in our brochure "Technique Exterior" in the download section of our website: [HYPERLINK „http://www.fundermax.at“](http://www.fundermax.at)

Suppliers for accessories

C-clamps

E.u.r.o.Tec GmbH
D-58099 Hagen, Unter dem Hofe 5
Tel: +49 (0)2331/6245-0
info@e-u-r-o-tec.de

EPDM Protective Tape

SFS Intec GmbH
A-2100 Korneuburg, Wiener Str. 29
Tel: +43 (0)2262/90500-0
at.korneuburg@sfsintec.biz

More suppliers you will find in our brochure „Technique Exterior“.

FunderMax France
3 Cours Albert Thomas
F-69003 Lyon
Tel.: +33 (0)4 78 68 28 31
Fax: +33(0)4 78 85 18 56
infofrance@fundermax.at
www.fundermax.at

FunderMax India Pvt. Ltd.
504, 5th floor, Brigade Towers
135, Brigade Road
IND-560025 Bangalore
Tel.: +91 80 4111 7004
Fax: +91 80 4112 7053
officeindia@fundermax.biz
www.fundermax.at

FunderMax Spain
Pol. Ind. Can Salvatella
Avda. Salvatella, 85-97
E-08210 Barberà del Vallès
Tel.: +34 93 729 63 45
Fax: +34 93 729 63 46
info.spain@fundermax.biz
www.fundermax.es

JAGO AG
Industriestrasse 21
CH-5314 Kleindöttingen
Tel.: +41 (0)56-268 81 31
Fax: +41 (0)56-268 81 51
info@jago.ch, www.jago.ch

FunderMax Polska Sp. z o.o.
ul. Rybitwy 12
PL-30722 Krakow
Tel.: +48-12-65 34 528
Fax: +48-12-65 70 545
infopoland@fundermax.biz

FUNDERMAX®

FunderMax GmbH
Klagenfurter Straße 87-89
A-9300 St. Veit/Glan
Tel.: +43 (0)5/9494-0
Fax: +43 (0)5/9494-4200
office@fundermax.at
www.fundermax.at

MEMBER OF *Constantia* INDUSTRIES